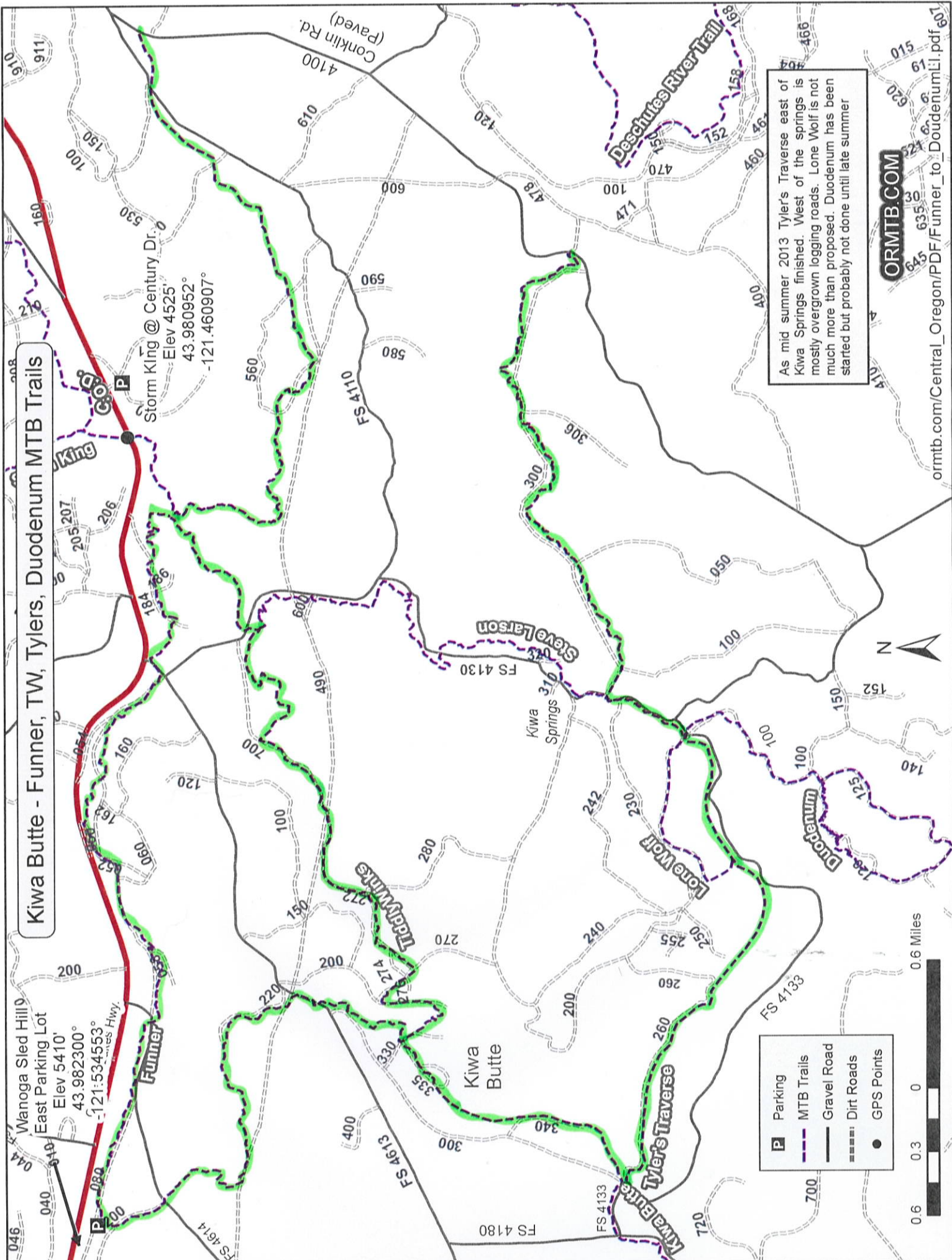


# Kiwa Butte - Funner, TW, Tylers, Duodenum MTB Trails



Wanoga Sled Hill  
East Parking Lot  
Elev 5410'  
43.982300°  
-121:534553°  
Hwy. 121

Storm King @ Century Dr.  
Elev 4525'  
43.980952°  
-121.460907°

<b>P</b>	Parking
	MTB Trails
	Gravel Road
	Dirt Roads
	GPS Points



As mid summer 2013 Tyler's Traverse east of Kiwa Springs finished. West of the springs is mostly overgrown logging roads. Lone Wolf is not much more than proposed. Duodenum has been started but probably not done until late summer

**ORMTB.COM**